

WP2**NEMA Rated Outdoor Power Supply/Battery Enclosure**

Altronix WP2 is a UL Listed, NEMA 4/IP 66 Rated outdoor power supply/battery and accessory enclosure with a metal backplane. It can accommodate a wide variety of Altronix power supplies, sub-assemblies, and other accessories.



WP2

Specifications**Features**

- Hot compression molded, halogen free, self extinguishing fiberglass reinforced polyester
- Stainless steel continuous hinge and stainless steel padlockable latches
- Integral flanges simplify wall or pole mounting
- Includes metal backplane for mounting power and accessories

Capacity

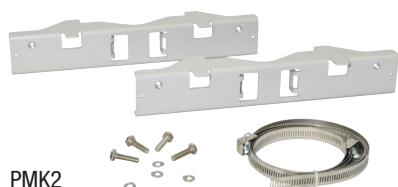
- Fits two (2) 12VDC/7AH or up to four (4) 12VDC/4AH batteries

Agency Listings

- UL Listed Enclosure
- CE European Conformity

Physical and Environmental**Dimensions (H x W x D)**

17.53" x 15.3" x 6.67" (445.3mm x 388.6mm x 169.4mm)

Product Weight 9 lb. (4.08 kg)**Shipping Weight** 10.5 lb. (11.57 kg)**Accessories (order separately)**

PMK2

PMK2**Pole Mount Kit**

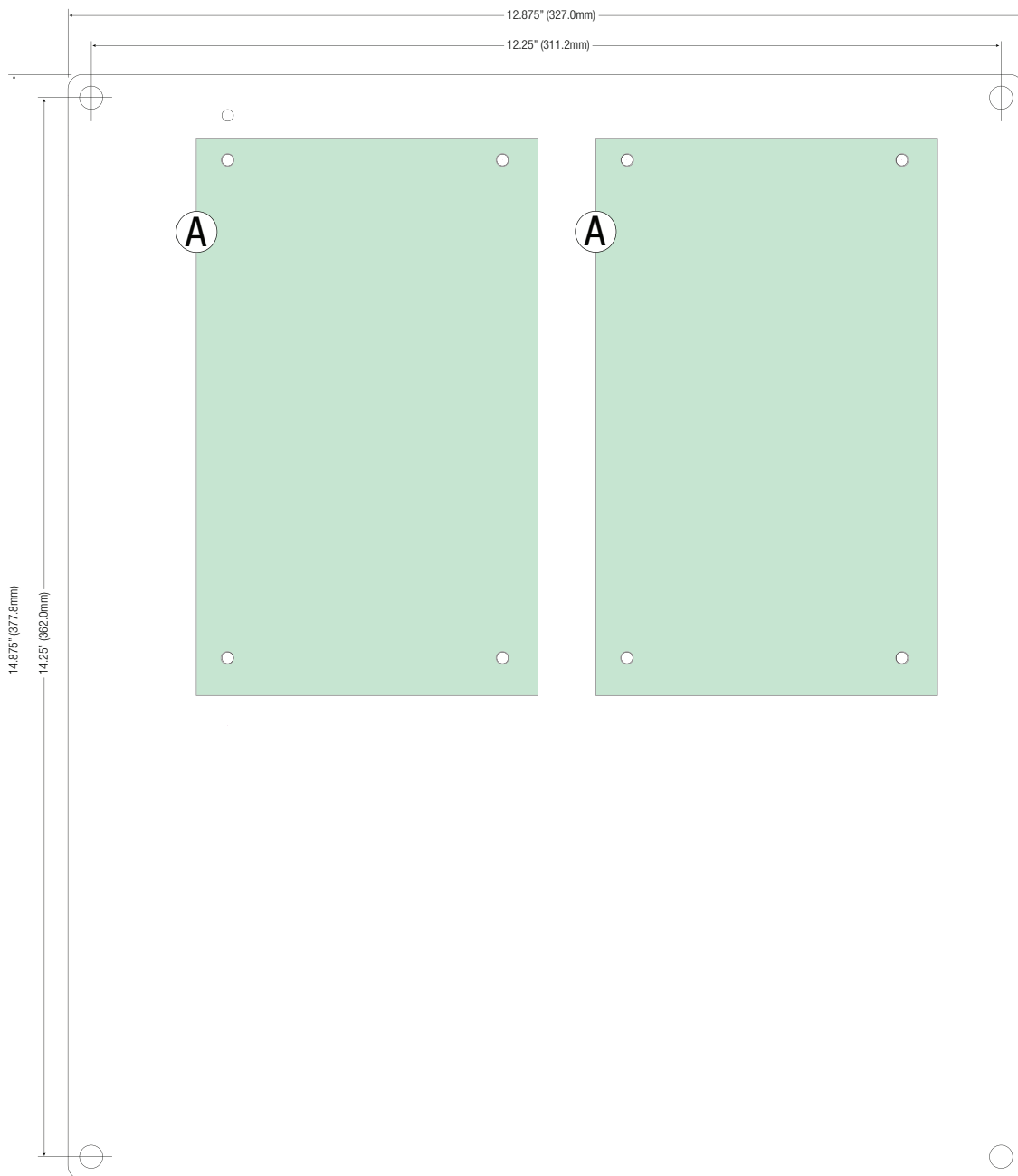
PMK2 pole mount kit is designed to simplify installation of outdoor units. It accommodates 2"- 8" (diameter) poles.

Kit includes:

- Two (2) powder coated steel mount brackets.
- Four (4) stainless steel bolts and lock washers.
- Two (2) wormgear quick release straps.

Product Position Chart for the Following Models:

Altronix Products	Mounting
ACM8, ACM8CB, ACMS8, ACMS8CB, AL300ULXB, AL400ULXB2, AL600ULXB, AL1012ULXB, AL1024ULXB2, eFlow3NB, eFlow4NB, eFlow6NB, eFlow102NB, eFlow104NB, LINQ8ACM, LINQ8ACMCB, OLS75, OLS120, OLS120D2, OLS180, OLS250	Ⓐ
ACM8, ACM8CB, ACMS8, ACMS8CB, AL300ULXB, AL400ULXB2, AL600ULXB, AL1012ULXB, AL1024ULXB2, eFlow3NB, eFlow4NB, eFlow6NB, eFlow102NB, eFlow104NB, LINQ8ACM, LINQ8ACMCB, OLS75, OLS120, OLS120D2, OLS180, OLS250	Ⓑ



Dimensions and Drawing

Dimensions (H x W x D approximate)

17.53" x 15.3" x 6.67" (445.3mm x 388.6mm x 169.4mm)

